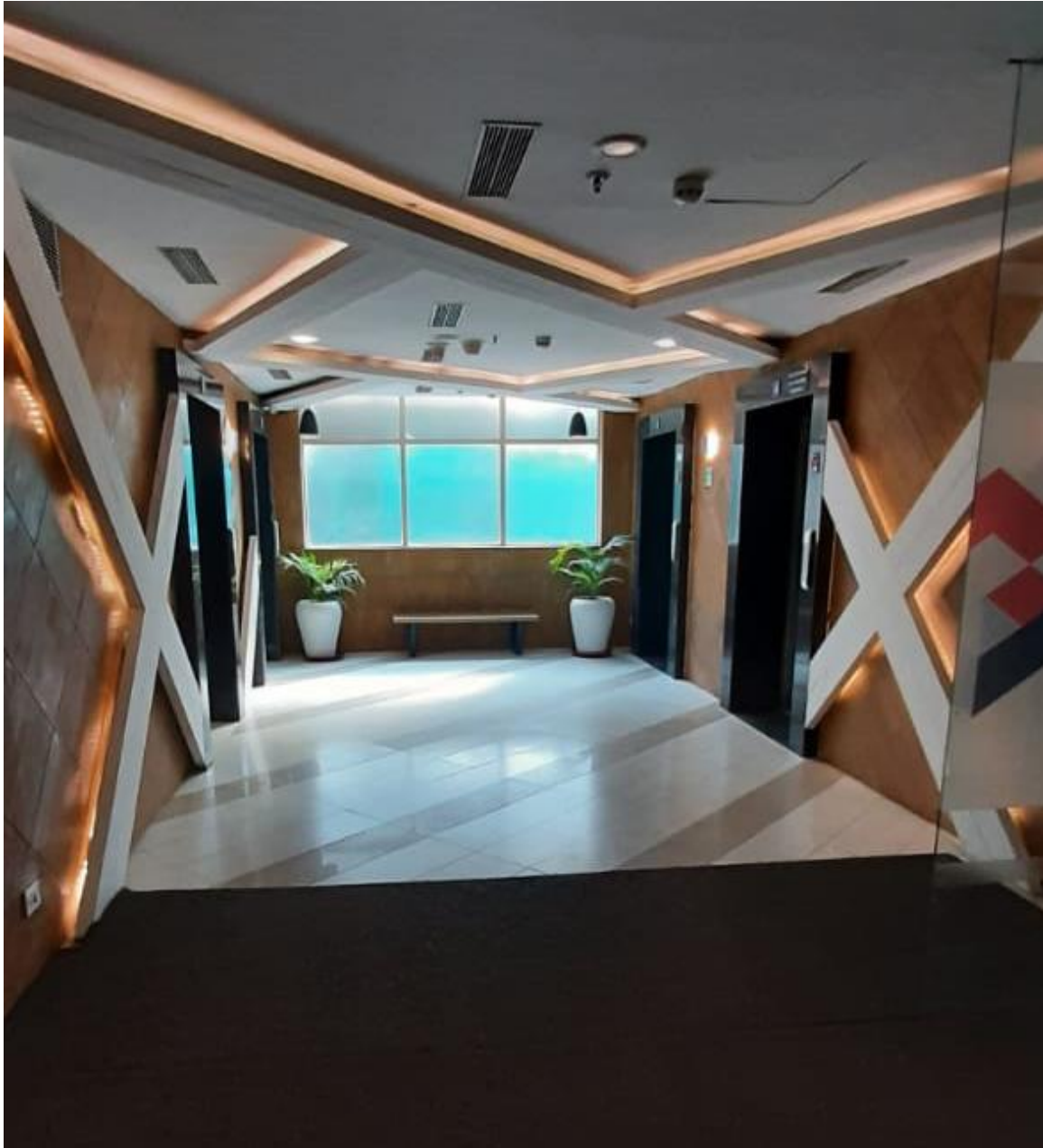




STELLAR 135

Single Floorplate of
32,143sqft available

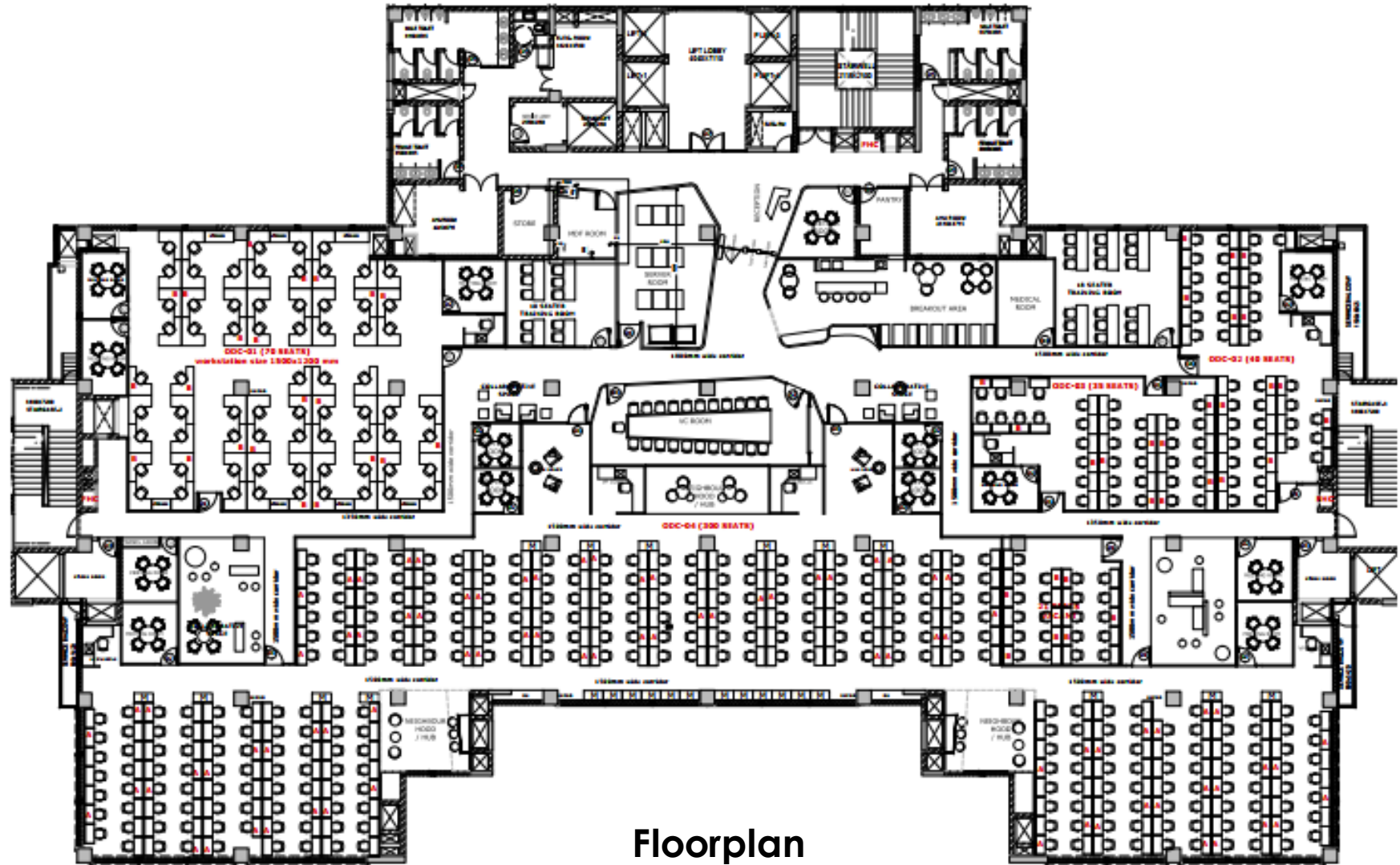


Project Details

Particulars	Details
Location/Address	Sec 135, Noida
Type of Space	IT/ITES
Total Project Area	251,787 sq.ft
Structure	Double Basement+Stilt+8 floors
Hand over Condition	Fully Furnished
Availability	From 21st Jan 2021
Project Status	Fully Operational
Amenities	Multi cuisine Food court Gym Conference Facilities

LEGEND

Workstations	466
Manager Cubicles	7
Meeting Rooms (4 pax)	15
VC Room	1
Collaborative Spaces	4
Training Rooms	2
Break out area	1
Hub Room	1
Medical Room	1
Store	3



Floorplan



FIT OUTS



Commercial Terms

Particulars	Details
Area Offered	32,143 Sq.ft on 4th floor
Maintenance Charges -8am-8pm (6 days a week) -24X7	Rs.18.50/Sq.ft/Month Rs.29/Sq.ft/Month
Parking	1 Car Parking free per 1000sqft leased
Additional Parking charges	Rs.4000/car park/month
Escalation on Rent	15% every 3 years
Interest Free Refundable Rent Security Deposit	Equivalent to 6 months' rent
Interest Free Refundable Maintenance Security Deposit	Equivalent to 3 months' Maintenance charges



CONTACT DETAILS

Corporate Office C56/9, Sector 62, Noida UP-201309

Email: hiba@infostellar.com

Mobile: +91-9910601611

Website: www.stellargroup.in